

# SEGREGATE KEY DRY RECYCLABLES

- Applies to every business in Scotland
- Source segregation preferred over co-mingled
- Covers metal, plastic, glass, paper & cardboard
- No exception for small or rural businesses



# INCINERATOR AND LANDFILL BANS

- Ban on municipal biodegradable waste going to landfill; the first of its kind in the UK:
  - Delayed until 2021
  - Applies to municipal type wastes only
- Ban on material collected for recycling going to landfill or incineration
- New requirement to remove key recyclables from residual waste prior to incineration



# WHAT YOU NEED TO DO

- Segregate your waste into the following:

**MIXED  
RECYCLING**



Paper  
Newspaper/Magazines  
Plastic  
Cardboard  
Aluminium Cans  
Polythene

**GLASS**



Glass Bottles  
Glass Jars  
Broken Glass

**FOOD**



Leftovers  
Cuttings  
Scraps  
Out of Date Produce  
Off Spec Produce

**GENERAL**



Any non  
hazardous  
waste which  
doesn't go  
into the  
recycling bins



# TURNING WASTE INTO RESOURCE OUR FACILITIES



# TURNING WASTE INTO A RESOURCE

## MIXED RECYCLING FACILITY (MRF)

### LINWOOD



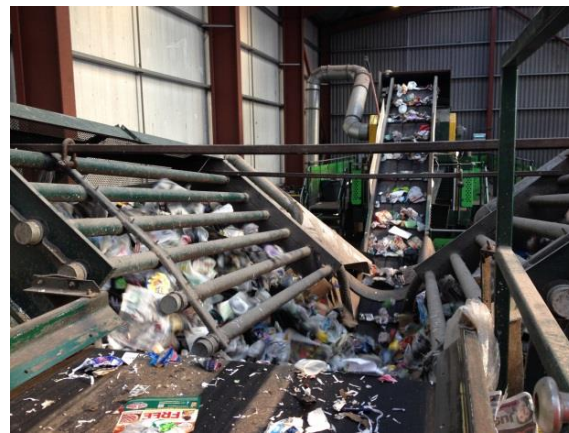
**Hopper Feed**



**Manual Picking**



**V-Screen**



**Loading**



**Sorting  
Non target  
Materials**



**Separate  
3D from  
2D**



# TURNING WASTE INTO A RESOURCE

## MIXED RECYCLING FACILITY (MRF)

### LINWOOD



**Accelerator Screen**



**Overband Magnet  
Eddy Current Magnet**



**Automatic Briquette  
Baler**



**Sizing  
Material**



**Segregating  
Metals**



**Can  
Bales**



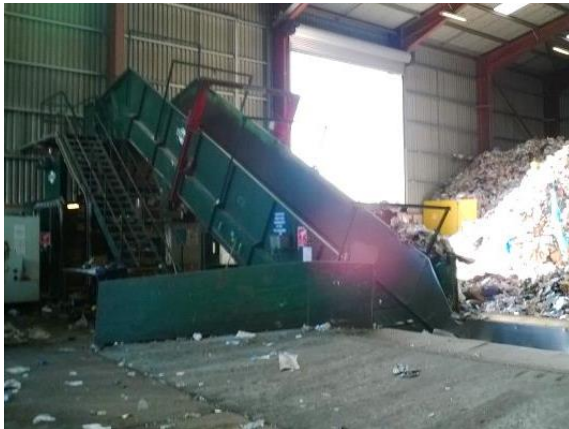
# TURNING WASTE INTO A RESOURCE

## MIXED RECYCLING FACILITY (MRF)

### LINWOOD



**Automatic Baler**



**The End Product**



**Baling**



**Bales**



# TURNING WASTE INTO A RESOURCE

## ANAEROBIC DIGESTION



- We turn your food waste into renewable energy
- AD is natural process which results in the creation of a Biogas (a mixture of methane and carbon dioxide) and a digestate which can be used as organic fertiliser
- The Biogas generates renewable energy sold to the national grid and the fertiliser is used in agriculture





# TURNING WASTE INTO A RESOURCE

## RDF – REFUSE DERIVED FUEL



- We offer our customers a genuine zero waste opportunity
- RDF processes and bales residual waste
- Waste is baled and sent to facilities where it is used to generate renewable energy
- Zero waste to landfill business



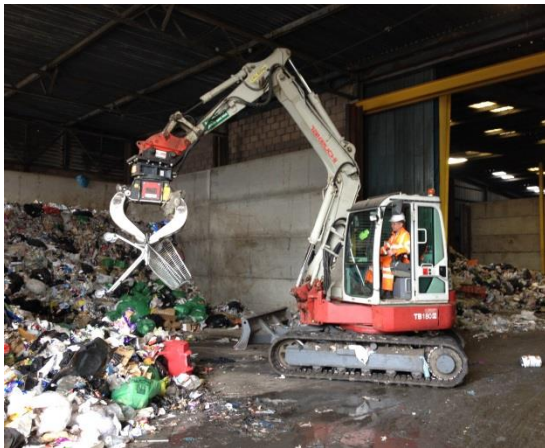
# TURNING WASTE INTO A RESOURCE

## REFUSE DERIVED FUEL (RDF)

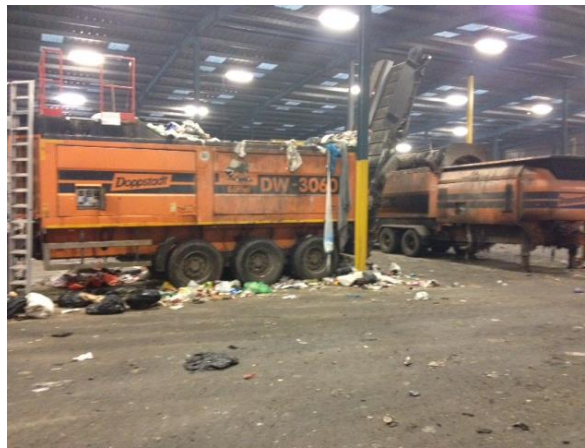
### LINWOOD



Visual segregation



Shredder



Over Band Magnet



**Pre-sorting**



**Shredding**



**Metals  
Recovery**



WEEE, Textiles,  
Cardboard  
Timber, Metal



# TURNING WASTE INTO A RESOURCE

## REFUSE DERIVED FUEL (RDF)

### LINWOOD



**Baling & Wrapping**



# WOOD

- The wood collected is recycled to create a number of useful products.
- Woodchip is reintroduced as a component in Panel Board manufacturing and is treated to develop decorative mulches for landscaping
- Animal bedding arena surfacing for the Equestrian industry
- Much of our wood waste is processed to manufacture a Bio Fuel which is used to generate renewable energy





# SUPPORTING YOU ON YOUR JOURNEY TO ZERO WASTE

